

### **1. Rules**

- 1.1) All races will be governed by the Racing Rules of Sailing 2009-2012 (RRS), the prescriptions of the RYA, the rules of the appropriate classes, except as changed by these sailing instructions.
- 1.2) The organising authority is Derwent Reservoir Sailing Club.

### **2. Entries**

- 2.1) Eligible boats may be entered by completing registration with the organising authority.
- 2.2) All boats using the club facilities, whether racing or not, must be covered by third party insurance of no less than £2,000,000 (two million pounds).
- 2.3) Flag Y will not normally be flown. This changes rule 40.1. No person shall be afloat unless wearing an adequate flotation device. The RYA recommend a minimum of 50 Newtons positive buoyancy.

### **3. Notices to Competitors and Signals Ashore**

- 3.1) Special Flags, when flown from the Club flag pole, on the shore line to the east of the clubhouse.  
*Code flag R ; Restricted Area.*  
*Red Flag; inexperienced sailors are recommended not to sail.*  
*Red & Black flags; experienced windsurfers only.*  
*Black Flag; No sailing.*
- 3.2) Any racing signals ashore will be displayed on the club flagpole.
- 3.3) Changes to Sailing Instructions will be posted on the Official Notice Board, at least sixty minutes before the first warning signal flag of the day is displayed.

### **4. Schedule of Races**

- 4.1) The scheduled time for the first warning signal on 27<sup>th</sup> June is 1300hrs. A briefing will be held in the club house at 1200hrs on 27<sup>th</sup> June.
- 4.2) The scheduled time for the first warning signal on 28<sup>th</sup> June is 1030hrs.
- 4.3) Three races are scheduled on both days.
- 4.4) No warning signal will be made after 1400hrs on 28<sup>th</sup> June.
- 4.5) Any change in the schedule will be posted by 1900hrs on the day before it will take effect.

### **5. Class Flags**

- 5.1) Class flags will be numeral pennant 8 for the Musto Skiff class and flag Q for the B14 class.
- 5.2) If it is necessary to use alternative class flags for any reason, an Official notice to competitors will be displayed.

### **6. Racing Area and Hazard**

The racing area will be the Derwent Reservoir except the Nature Reserve at the south west end of the lake, marked by white posts on north & south shores. This area is out of bounds at all times. There is an old wall and long spit projecting into the water from east of Hunter House, on the opposite shore to the clubhouse. This is marked by a Dan Buoy with "W" on it. It is advised not to sail between the shore and the Dan Buoy.

### **7. The Course**

- 7.1) The diagram in Attachment A shows the course, including the approximate angles between legs, the order in which marks are to be passed, and the side on which each mark is to be left.
- 7.2) A leeward gate will be used. Boats shall sail between the gate marks from the direction of the previous mark and round either gate mark.

### **8. Postponement**

- 8.1) Signals as in Rule 27.3. The flags will be flown on the Committee Boat allocated to the event. If the Committee Boat is on the water a distance from the shore, an announcement, on the PA system, of the postponement, may be made for the benefit of sailors still on shore. The RO will arrange for an announcement, on the PA system or by other means, of when the postponed race is likely to be started.

### **9. The Start**

- 9.1) Starting will be in accordance with Rule 26.
- 9.2) The start line will be between the Committee Boat mast, flying an Orange flag, and a start mark which will be orange flying an orange flag.
- 9.3) Boats whose Preparatory Signal has not been made must keep clear of the start area and of boats whose Preparatory Signal has been made.
- 9.4) A boat starting later than 4 minutes after her starting signal will be scored Did Not Start (DNS). This changes rule A4.

### **10. Starting Penalties**

Rule 30.1 or 30.3. may be enforced.

### **11. Starting Recalls**

11.1) Rule 29.1 for individual recalls. *If possible* the offending boat(s) will be hailed, however the onus is on the offending boat(s) to return and restart correctly.

11.2) General Recalls as per Rule 29.2 except that if the recalled fleet start is one of a series of starts then the offending fleet will wait until all other fleets have been started before a new warning signal is given.

### **12. The Finish**

12.1) The Committee Boat will fly a BLUE flag to indicate that it is on station to finish boats crossing the line which will be between the Committee boat and the orange start mark with an orange flag.

12.2) Abandoning after the start. Rule 32.1 will apply.

12.3) Shortening a race. Rule 32.2 will apply.

12.4) Lowering the blue flag when the last boat has finished the race or the time limit has expired will close the finishing line.

### **13. Penalty System**

13.1) Rules 44.1 and 44.2 are changed so that the penalty is only one turn, including one tack and one gybe.

13.2) Rule 31 will apply.

### **14. Time Limit**

14.1) The time limit will be seventy minutes for each race. In the event of the time being exceeded, the Race Committee reserves the right to take the result from the end of the previous recorded lap.

14.2) The time limit to Mark 1 is 20 minutes. If no boat has reached Mark 1 within the Mark 1 time limit then the race will be abandoned.

14.3) Boats failing to finish within fifteen minutes of the first boat of their class that sails the course and finishes will be scored "Did Not Finish". This changes Rule 35, A4 and A5.

### **15. Protests**

15.1) Protests shall be written on forms available from the Race Office and be delivered back there within thirty minutes after the time of the last boat to come ashore.

15.2) Protests will be heard in approximately the order of receipt and as soon as possible. Time and venue of hearings will be posted on the official notice board.

15.3) Notices of protests by the race or protest committee will be posted to inform boats under rule 61.1(b)

15.4) On the last day scheduled day of racing a request for redress from a protest committee decision shall be delivered no later than 30 minutes after the decision was posted. This changes Rule 62.2.

### **16. Scoring**

16.1) The Low Point scoring system of Appendix A will apply.

16.2) 2 races are required to be completed to constitute a series.

16.3) When 3 races or fewer have been completed, a boat's series score will be the total of her race scores.

16.4) When from 4 to 6 races have been completed, a boat's series score will be the total of her race scores excluding her worst score.

### **17. Prizes**

17.1) Prizes will be awarded to the first 3 boats in each fleet.

17.2) Additional prizes may be awarded depending on the numbers in each fleet.

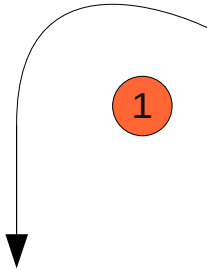
### **18. Splitting Ties**

Rule A8 will apply.

### **19. Waste Disposal**

Boats shall not put rubbish into the water. Any rubbish may be placed aboard support ribs.

**Attachment A – Course Diagram**



Example 1 lap race:  
Start – 1 – (2s,2p)- Finish  
Example 2 lap race:  
Start – 1 – (2s,2p)- Start/Finish – 1 – (2s,2p) – Finish  
etc.

